

mimsal



2023

Medical Lighting

MEDICAL DEVICES - CLASS I



MIMSAL

MIMSAL is a specialized lighting solutions supplier for the healthcare sector. We offer a wide range of luminaires designed to satisfy the diversity of the end-user needs and for each activity sector, by offering technical advice and commercial support to the professionals / prescribers of the healthcare.

Our products are engineered for easy mounting, with modern electronic components and light sources for the best energy efficiency and economy.

Our products and solutions are manufactured and certified in accordance with Regulation (EU) 2017/745 of the European Parliament and of the Council on medical devices.

MIMSAL complies with the quality certification ISO 9001 and ISO 13485.





CONTENT

MEDICAL DEVICES - CLASS I

- SURGERY LAMP

 - MIMLED

 - MIMLED 1000

 - MIMLED 600

- LAMP FOR EXAMINATION AND MINOR SURGERY PROCEDURES

 - MS CEILING

 - MS CEILING

 - MS CEILING PLUS

 - MS LED

 - MS LED

 - MS LED Plus

 - MS FLEX

 - MS Flex

 - MS Flex Plus

 - LUXIFLEX LED II **NEW!**

 - Luxiflex LED II

 - Luxiflex LED Plus II

 - LUXIFLEX SENSOR II **NEW!**

 - Luxiflex Sensor II

 - Luxiflex Sensor Plus II

 - LUXIFLEX LED

 - Luxiflex LED

 - Luxiflex LED Plus

 - LUXIFLEX SENSOR

 - Luxiflex Sensor

 - Luxiflex Sensor Plus

 - LUXIFLEX HAL

- MAGNIFIER LUMINAIRE

 - LUPA LED HF

 - LUPA HF

- WOODS LAMP

 - VISTA LED

 - Vista LED Handle

 - Vista LED Plus

 - VISTA HF

 - Vista Handle HF

 - Vista Plus HF

- X-RAY VIEWERS

 - X-RAY VIEWERS AF LED

 - AF 400 LED

 - AF 300 LED

 - AF 200 d/c LED

- ACCESSORIES

MIMLED 1000 | 600



Compact LED Surgery lamp.

Available in two versions: **MIMLED 1000** and **MIMLED 600**.

HIGH EFFICIENCY

MIMLED 1000	100.000 lux at 1 meter
MIMLED 600	60.000 lux at 1 meter

HOMOGENEOUS ILLUMINATION

Each LED module illuminates the surgical field independently. The result is a shadow-free and homogenous light field over a large depth of illumination even when operating directly under the luminaire.

LIGHT CONTROL WITH ENDO MODE

While most compact medical luminaires cannot be operated at reduced brightness, the MIMLED offers a wide range of brightness options down to only 10.000 lux.

COLOR RENDITION / TEMPERATURE

The lights provide a high color rendering index (CRI) of over 95 for optimal tissue contrast. Especially red color tones are reproduced with highest fidelity ($R_v > 90$) and enhance the visualization of the surgical field. The MIMLED have a fixed color temperature of 4.000 K.

DESIGN & HANDLING

The compact and rounded shape of the luminaire reduces drag in OR with laminar flow systems and keeps the operating field sterile. Separate light controls for sterile and non-sterile users ensures intuitive and safe handling. Turn on the light and control the brightness by simply turning the blue sterile handle.

AVAILABLE IN 3 OPTIONS

- Trolley Stand.
- Wall version.
- Ceiling version (up to 3.40 meter height).



Adjustable light intensity integrated in the grip

MIMLED 1000

Technical Details	
Illumination at 100 cm	10.000 to 100.000 lux in ten steps
Number of LEDs	15 LEDs
Useful life	≥ 50.000 hours
Total irradiance	390 W/m ²
Power consumption	33 W
Color temperature	4.000 °K
Light field diameter at 1 meter	210 mm
Light field diameter D _{50/10}	140 mm / 210 mm
Color rendering	≥ 95% R _a / ≥ 90% R _g
Power supply	100/240 V - 50/60 Hz

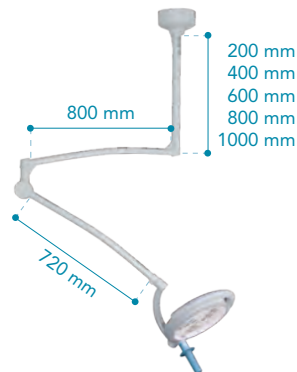


MIMLED 600

Technical Details	
Illumination at 100 cm	10.000 to 60.000 lux in six steps
Number of LEDs	15 LEDs
Useful life	≥ 50.000 hours
Total irradiance	220 W/m ²
Power consumption	24 W
Color temperature	4.000 °K
Light field diameter at 1 meter	210 mm
Light field diameter D _{50/10}	140 mm / 210 mm
Color rendering	≥ 95% R _a / ≥ 90% R _g
Power supply	100/240 V - 50/60 Hz



WALL version
REF. ML1000W
ML600W



CEILING version (REF.)
ML1000C 200 ML600C 200
ML1000C 400 ML600C 400
ML1000C 600 ML600C 600
ML1000C 800 ML600C 800
ML1000C 1000 ML600C 1000



TROLLEY version
REF. ML1000FL
ML600FL

MS CEILING

MS CEILING PLUS

Minor surgery and advanced exploration luminaire designed to be ceiling mounted. The lamp incorporates a LED light source and a highly precise articulated arm that allows the luminaire to be adjusted in any position.

The quality of the materials used in its manufacture makes it especially suitable for intensive use in surgery and examinations.

Exceptional quality of LED light

The powerful LED light source offers exceptional light quality and a lifespan of more than 50,000 hours.

The high performance of the color Ra 97% depicts the exceptional quality of white light for an excellent distinction of fabrics and its reproducing all visible colors, naturally and precisely.

Ergonomic design

The circular shape of the head and its handle in the lower part facilitate its exact positioning, fulfilling the ergonomic requirements for any use.

Designed with clean and soft shapes which facilitate hygiene and cleanliness in medical environments.

Ceiling Support

The ceiling support is included. It is manufactured specifically for the MS CEILING family lamp.

The MS CEILING family lamp is not compatible with any other accessory.

It is designed to be installed in ceilings up to 3 meters.

Versions

MS CEILING	45.000 lux at 50 cm On/Off version
MS CEILING PLUS	65.000 lux at 50 cm Adjustable light intensity version



MS CEILING PLUS

Technical Details	(REF. M187001C)
Light source	LED 12W
Illumination at 50 cm	65.000 lux
Dimmable	Yes
Color temperature	4.500 °K
Color rendering	> 97%
Useful life	50.000 hours
Articulated Arm Length	1.050 mm
Ceiling support length	1.000 mm maximum
Color	White



MS CEILING PLUS version

MS CEILING version



MS CEILING

Technical Details	(REF. M183500C)
Light source	LED 8W
Illumination at 50 cm	45.000 lux
Dimmable	No
Color temperature	4.500 °K
Color rendering	> 97%
Useful life	50.000 hours
Articulated Arm Length	1.050 mm
Ceiling support length	1.000 mm maximum
Color	White



MS LED

MS LED PLUS

MS LED is a minor surgery and advanced exploration luminaire. The lamp is manufactured with a LED light source and it is mounted with a highly precise articulated arm. Its arm allows the luminaire to be adjusted in any position.

The quality of the materials used in its manufacture makes it especially suitable for intensive use in surgery and examinations.

Exceptional quality of LED light

The powerful LED light source offers exceptional light quality and a lifespan of more than 50,000 hours.

The high performance of the color Ra 97% depicts the exceptional quality of white light for an excellent distinction of fabrics and its reproducing all visible colors, naturally and precisely.

Versions

MS LED	45.000 lux at 50 cm On/Off version
MS LED PLUS	65.000 lux at 50 cm Adjustable light intensity version

Ergonomic design

The circular shape of the head and its handle in the lower part facilitate its exact positioning, fulfilling the ergonomic requirements for any use.

Designed with clean and soft shapes which facilitate hygiene and cleanliness in medical environments.

Mounting options

The standard version includes AH table clamp.

As for accessories, we offer a wide selection of supports such as wall supports, wall extension arms, trolleys stand and rail brackets.



●..... MS LED Plus version.
Dimmable, adjustable light intensity.

MS LED version



MS LED

Technical Details	(REF. M183500)
Light source	LED 8W
Illumination at 50 cm	45.000 lux
Dimmable	No
Color temperature	4.500 °K
Color rendering	> 97%
Useful life	50.000 hours
Articulated Arm Length	900 mm
Color	White

MS LED PLUS

Technical Details	(REF. M187001)
Light source	LED 12W
Illumination at 50 cm	65.000 lux
Dimmable	Yes
Color temperature	4.500 °K
Color rendering	> 97%
Useful life	50.000 hours
Articulated Arm Length	900 mm
Color	White



WALL B SUPPORT
REF. B0101800



AH TABLE CLAMP
REF. B010190



RAIL PLUS BRACKET
REF. 82026



EXTENSION ARM
REF. B0101S0

TROLLEY STAND
8,8 kg REF. 09651



MS FLEX

MS FLEX PLUS

MS FLEX is a minor surgery and advanced exploration luminaire. The lamp is manufactured with a LED light source and it is mounted with a highly precise flexible arm. Its arm allows the luminaire to be adjusted in any position.

The quality of the materials used in its manufacture makes it especially suitable for intensive use in surgery and examinations.

Exceptional quality of LED light

The powerful LED light source offers exceptional light quality and a lifespan of more than 50,000 hours.

The high performance of the color Ra 97% depicts the exceptional quality of white light for an excellent distinction of fabrics and its reproducing all visible colors, naturally and precisely.

Versions

MS FLEX	45.000 lux at 50 cm On/Off version
MS FLEX PLUS	65.000 lux at 50 cm Adjustable light intensity version

Ergonomic design

The circular shape of the head and its handle in the lower part facilitate its exact positioning, fulfilling the ergonomic requirements for any use.

Designed with clean and soft shapes which facilitate hygiene and cleanliness in medical environments.

Mounting options

The standard version includes AH table clamp.

As for accessories, we offer a wide selection of supports such as wall supports, wall extension arms, trolleys stand and rail brackets.



●..... MS Flex Plus version.
Dimmable, adjustable
light intensity.

MS Flex version



MS Flex Plus version



MS FLEX

Technical Details	(REF. M183500FL)
Light source	LED 8W
Illumination at 50 cm	45.000 lux
Dimmable	No
Color temperature	4.500 °K
Color rendering	> 97%
Useful life	50.000 hours
Flexible Arm Length	700 mm
Color	White

MS FLEX PLUS

Technical Details	(REF. M187001FL)
Light source	LED 12W
Illumination at 50 cm	65.000 lux
Dimmable	Yes
Color temperature	4.500 °K
Color rendering	> 97%
Useful life	50.000 hours
Flexible Arm Length	700 mm
Color	White





WALL B SUPPORT
REF. B0101800



AH TABLE CLAMP
REF. B010190



RAIL PLUS BRACKET
REF. 82026

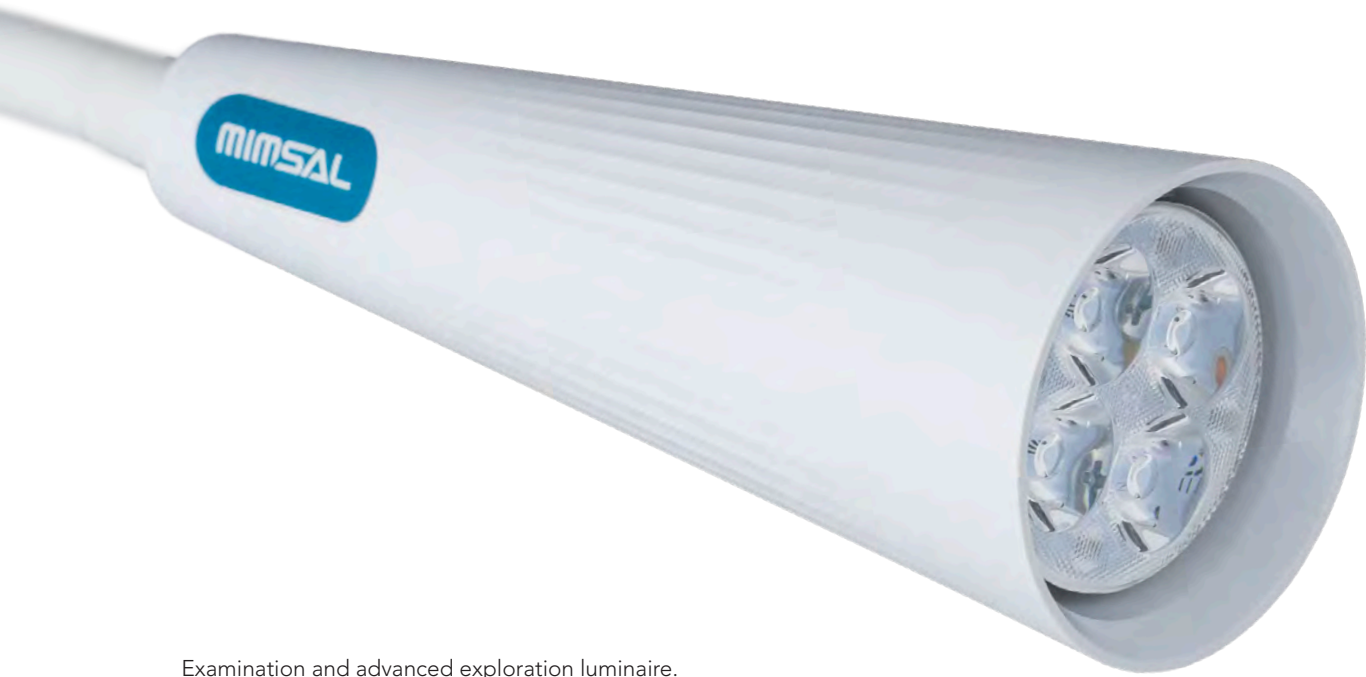


EXTENSION ARM
REF. B0101S0

TROLLEY STAND
8,8 kg REF. 09651

LUXIFLEX LED II

LUXIFLEX LED PLUS II



Examination and advanced exploration luminaire.

Available in two versions: LUXIFLEX LED II and LUXIFLEX LED PLUS II

HIGH EFFICIENCY

LUXIFLEX LED II 25.000 lux at 50 cm.

LUXIFLEX LED PLUS II 50.000 lux at 50 cm.

The powerful LED light source offers exceptional light quality and a lifespan of more than 50,000 hours.

The Plus II version has the high performance of the color Ra 97% that depicts the exceptional quality of white light for an excellent distinction of fabrics and its reproducing all visible colors, naturally and precisely.

FLEXIBILITY

Flexible, height-adjustable and highly precise arm that allows the luminaire to be adjusted to any position.

DESIGN & HANDLING

Designed with clean and soft shapes which facilitate hygiene and cleanliness in medical environments.

Its compact head and the switch located at the base of the lamp make this model an ideal luminaire for the most demanding examinations procedures.

MOUNTING OPTIONS

The standard version includes AH table clamp.

As for accessories, we offer a wide selection of supports such as wall supports, wall extension arms, trolleys stand and rail brackets.



Luxiflex LED Plus II



Luxiflex LED II

LUXIFLEX LED II

Technical Details	(REF. LX2370)
Light source	LED 8W
Useful life	50.000 hours
Illumination at 50 cm	25.000 lux
Color temperature	4.500 °K
Color rendering	>80%
Total length	935 mm
Color	White

LUXIFLEX LED PLUS II

Technical Details	(REF. LX2370P)
Light source	LED 12W
Useful life	50.000 hours
Illumination at 50 cm	50.000 lux
Color temperature	4.500 °K
Color rendering	>97%
Total length	935 mm
Color	White





AH TABLE CLAMP
REF. B010190



WALL B SUPPORT
REF. B0101800



RAIL PLUS BRACKET
REF. 82026



EXTENSION ARM
REF. B0101S0



TROLLEY STAND
4 kg REF. 09655
8,8 kg REF. 09651

LUXIFLEX SENSOR II

LUXIFLEX SENSOR PLUS II



Examination and advanced exploration luminaire.

Available in two versions: LUXIFLEX SENSOR II and LUXIFLEX SENSOR PLUS II.

HIGH EFFICIENCY

LUXIFLEX SENSOR II 25.000 lux at 50 cm.

LUXIFLEX SENSOR PLUS II 50.000 lux at 50 cm.

The powerful LED light source offers exceptional light quality and a lifespan of more than 50,000 hours.

The Plus II version has the high performance of the color Ra 97% that depicts the exceptional quality of white light for an excellent distinction of fabrics and its reproducing all visible colors, naturally and precisely.

CONTACTLESS SWITCH

Allows to switch the lamp on and off without contact.

Adjustable light intensity.

FLEXIBILITY

Flexible, height-adjustable and highly precise arm that allows the luminaire to be adjusted to any position.

DESIGN & HANDLING

Designed with clean and soft shapes which facilitate hygiene and cleanliness in medical environments.

Its compact head and the switch located at the base of the lamp make this model an ideal luminaire for the most demanding examinations procedures.

MOUNTING OPTIONS

The standard version includes AH table clamp.

As for accessories, we offer a wide selection of supports such as wall supports, wall extension arms, trolleys stand and rail brackets.



Luxiflex Sensor II

LUXIFLEX SENSOR II

Technical Details	(REF. LX2324S)
Light source	LED 8W
Useful life	50.000 hours
Illumination at 50 cm	25.000 lux
Color temperature	4.500 °K
Color rendering	>80%
Total length	935 mm
Color	White
Dimmable	YES

LUXIFLEX SENSOR PLUS II

Technical Details	(REF. LX2324SP)
Light source	LED 12W
Useful life	50.000 hours
Illumination at 50 cm	50.000 lux
Color temperature	4.500 °K
Color rendering	>97%
Total length	935 mm
Color	White
Dimmable	YES



Luxiflex Sensor Plus II





AH TABLE CLAMP
REF. B010190



WALL B SUPPORT
REF. B0101800



RAIL PLUS BRACKET
REF. 82026



EXTENSION ARM
REF. B0101S0



TROLLEY STAND
4 kg REF. 09655
8,8 kg REF. 09651

LUXIFLEX LED

LUXIFLEX LED PLUS

Luxiflex is a cold light luminaire, versatile with a compact design. Luxiflex is conceived for medical examination procedures that require great performance.

Flexibility

Flexible arm allows to adjust the height to assure the proper working distance.

Compact design

Luxiflex offers easy use, thanks to its compact LED head with a diameter of 8 cm and its switch located at the base of the lamp. These features make this model an ideal luminaire for the most demanding examinations procedures.

Mounting options

The standard version includes AH table clamp. As for accessories, we offer a wide selection of supports such as wall supports, wall extension arms, trolleys stand and rail brackets.

High performance LED

Luxiflex LED	15.000 lux at 50 centimeters.
Luxiflex LED Plus	35.000 lux at 50 centimeters.

LUXIFLEX LED

Technical Details (REF. I0104AOLED)	
Light source	LED 6W 15°
Useful life	50.000 hours
Illumination at 50 cm	15.000 lux
Color temperature	4.500 °K
Color rendering	>80%
Total length	85 cm
Color	White

LUXIFLEX LED PLUS

Technical Details (REF. I0104NL)	
Light source	LED 10W 14°
Useful life	50.000 hours
Illumination at 50 cm	35.000 lux
Color temperature	4.500 °K
Color rendering	97%
Total length	85 cm
Color	White



Luxiflex LED Plus



WALL B SUPPORT
REF. B0101800



AH TABLE CLAMP
REF. B010190



RAIL PLUS BRACKET
REF. 82026



EXTENSION ARM
REF. B0101S0



TROLLEY STAND
4 kg REF. 09655
8,8 kg REF. 09651

LUXIFLEX SENSOR LUXIFLEX SENSOR PLUS

Luxiflex Sensor is a cold light luminaire, versatile and with a compact design. Luxiflex Sensor is manufactured with a contactless switch. This luminaire is designed for medical examination procedures that require great performance.

Flexibility

Flexible arm allows to adjust the height to assure the proper working distance.

Compact design

Luxiflex offers easy use, thanks to its compact LED head with a diameter of 8 cm and its contactless switch located at the base of the lamp. These features make this model an ideal luminaire for the most demanding examinations procedures.

Mounting options

The standard version includes AH table clamp. As for accessories, we offer a wide selection of supports such as wall supports, wall extension arms, trolleys stand and rail brackets.

High performance LED

Luxiflex Sensor	15.000 lux at 50 centimeters.
Luxiflex Sensor Plus	35.000 lux at 50 centimeters.

Contactless switch

Allows light intensity regulation by approaching a hand around 8cm near the sensor.



Luxiflex Sensor

LUXIFLEX SENSOR

Technical Details (REF. I0104AOLEDSR)	
Light source	LED 6W 15°
Useful life	50.000 hours
Illumination at 50 cm	15.000 lux
Color temperature	4.500 °K
Color rendering	>80%
Total length	850 mm
Color	White
Dimmable	YES



LUXIFLEX SENSOR PLUS

Technical Details (REF. I0104NLSR)	
Light source	LED 10W 14°
Useful life	50.000 hours
Illumination at 50 cm	35.000 lux
Color temperature	4.500 °K
Color rendering	97%
Total length	850 mm
Color	White
Dimmable	YES

TROLLEY STAND
 4 kg REF. 09655
 8,8 kg REF. 09651



Contactless
switch



WALL B SUPPORT
REF. B0101800



AH TABLE CLAMP
REF. B010190



RAIL PLUS BRACKET
REF. 82026



EXTENSION ARM
REF. B0101S0

LUXIFLEX HAL

Luxiflex HAL is a versatile lamp with a compact design. Luxiflex is conceived for medical examination procedures that require great performance.

Also available in LED version: Luxiflex LED and Luxiflex LED Plus.

Flexibility

Flexible arm allows to adjust the height to assure the proper working distance.

Compact design

Luxiflex offers easy use, thanks to its compact head with a diameter of 8 cm and its switch located at the base of the lamp. These features make this model an ideal luminaire for the most demanding examinations procedures.

Mounting options

The standard version includes AH table clamp.

As for accessories, we offer a wide selection of supports such as wall supports, wall extension arms, trolleys stand and rail brackets.



LUXIFLEX HAL

Technical Details (REF. I0104AO)	
Light source	Halogen 35W 10°
Useful life	5.000 hours
Illumination at 50 cm	35.000 lux
Color temperature	3.000 °K
Color rendering	100%
Total length	85 cm
Color	White
Protective Glass	YES



WALL B SUPPORT
REF. B0101800



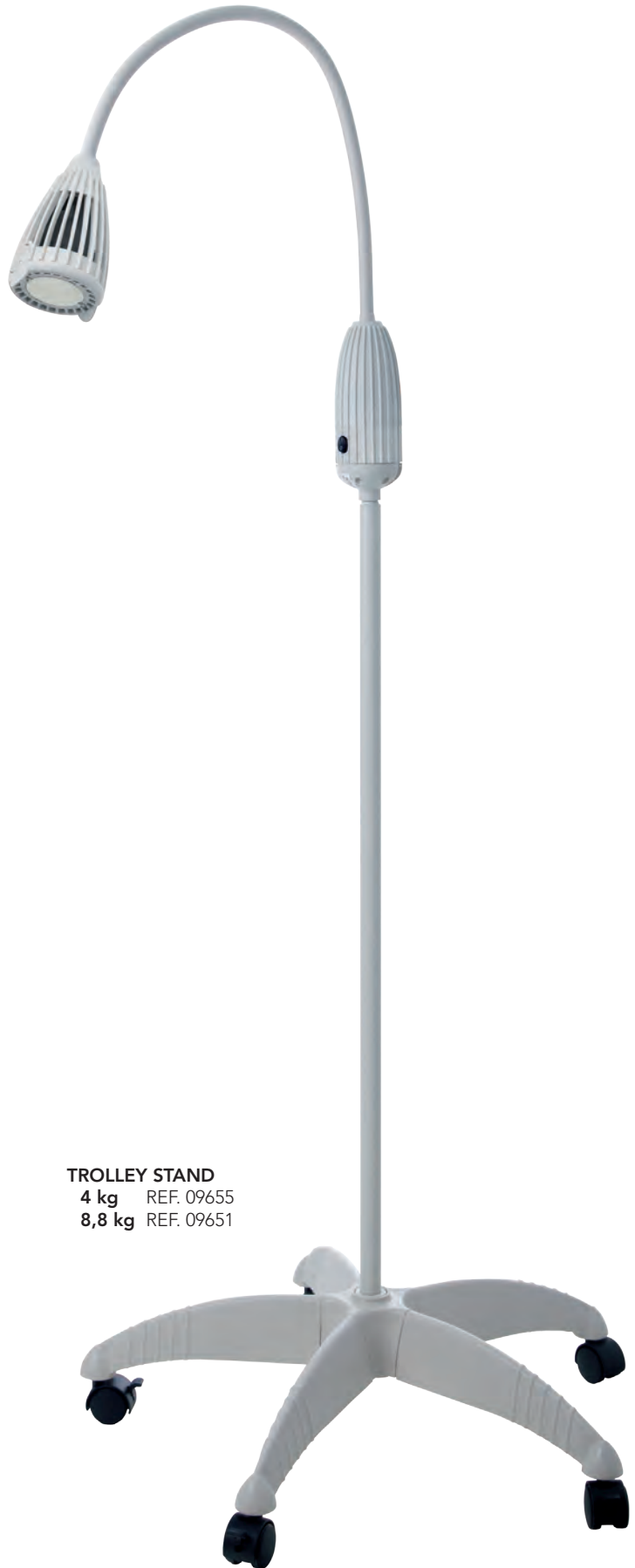
AH TABLE CLAMP
REF. B010190



RAIL PLUS BRACKET
REF. 82026



EXTENSION ARM
REF. B0101S0



TROLLEY STAND
4 kg REF. 09655
8,8 kg REF. 09651

LUPA LED H.F

LED magnifier with round lens, Lupa LED H.F is intended when performing any meticulous work in need of great accuracy. It is ideal for hospitals, measured studies, laboratories, aesthetic clinics, etc.

Functionality and Performance

Generates a light without dark spots.
Internal spring balanced arms that allow different positions.
Switch on the head.
Round head with convex lens, adjustable and simple mechanism

Mounting Options

The standard version includes AH table clamp.

As for accessories, we offer a wide selection of supports such as wall supports, wall extension arms, trolleys stand and rail brackets.

Cleaning and Safety

Head exempt of heat.
Protective cover on the head with hinge mechanism to prevent from dust and scratches that may damage the lens.

Economy

High performance, low power 8 W.
Long life, 40,000 hours.
Durable materials.
Very low maintenance costs.



LUPA LED H.F

Technical Details	(REF. 09340)
Light source	LED 8W
Useful life	40.000 hours
Color temperature	6.500 °K
Lenses	5 diopters
Magnification Lens Diameter	127 mm
Articulated Arm Length	900 mm
Lighting unit Net Weight	2,40 kg
Color	White



TROLLEY STAND
8,8 kg REF. 09651





WALL B SUPPORT
REF. B0101800



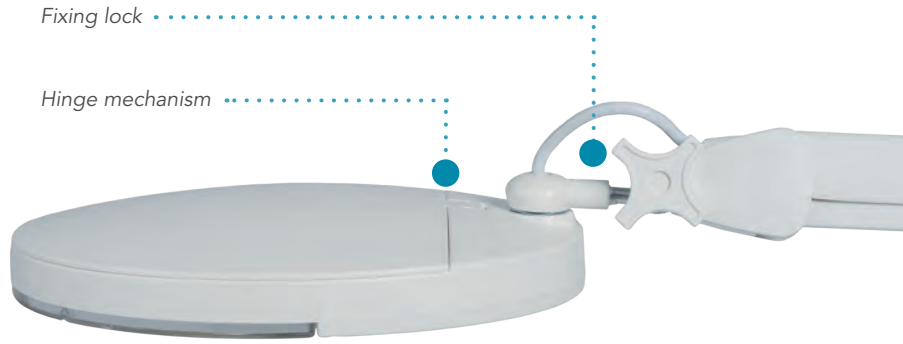
AH TABLE CLAMP
REF. B010190



RAIL PLUS BRACKET
REF. 82026

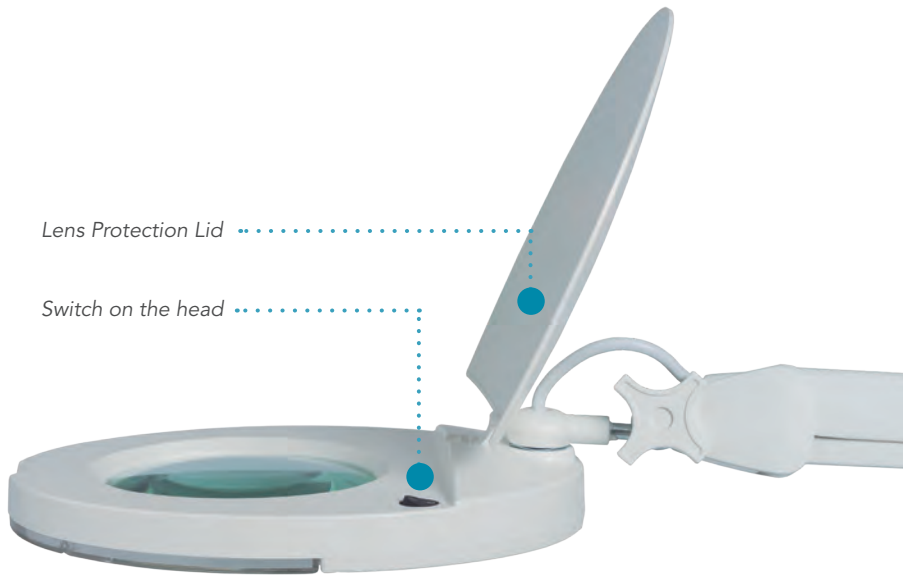


EXTENSION ARM
REF. B0101S0



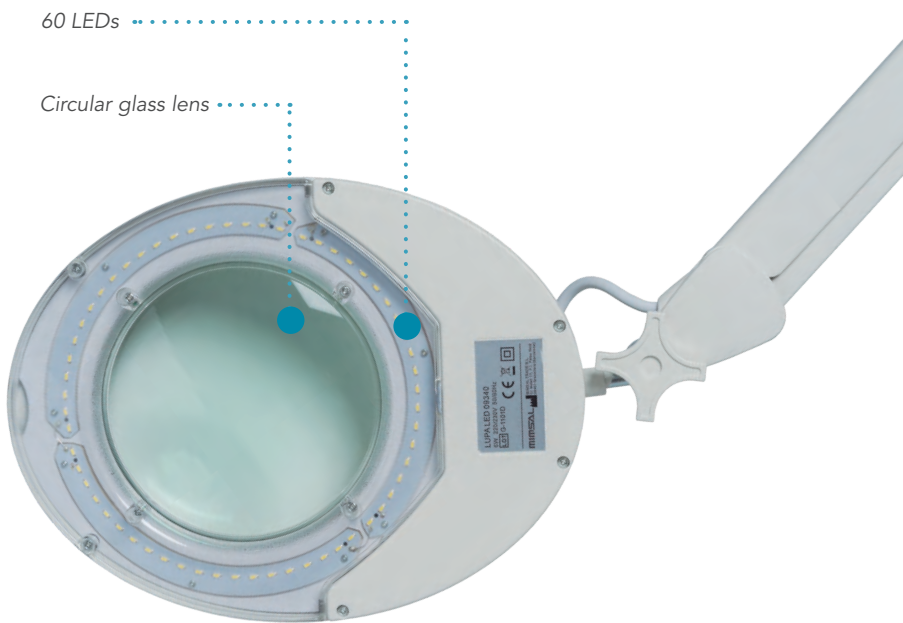
Fixing lock

Hinge mechanism



Lens Protection Lid

Switch on the head



60 LEDs

Circular glass lens

LUPA H.F

Cold light luminaire with magnifying lens, essential for high precision work. An ideal use for hospitals, medical centers, laboratories and aesthetic clinics.

Light Source

Low consumption 22W circular fluorescent tube.

Produces a light without dark spots and does not overheat.

Lifetime of 10.000 hours.

Functionality and performances

Adjustable height articulated arm that allows easy movement in different positions.

Head with biconvex circular lens of 5 diopters, adjustable and simple mechanism.

Switch on the head of the luminaire.

Security and hygiene

Head with protective cover to prevent dust or scratches that may damage the lens.

Mounting Options

Standard version includes AH table clamp.

As for accessories, we offer a wide selection of supports such as wall supports, wall extension arms, trolleys stand and rail brackets.



LUPA H.F

Technical Details	(REF. 09332)
Light source	FL 22W
Useful life	10.000 hours
Color temperature	6.500 °K
Lenses	5 diopters
Magnification Lens Diameter	125 mm
Articulated Arm Length	900 mm
Lighting unit Net Weight	2,56 Kg
Color	White

TROLLEY STAND
8,8 kg REF. 09651





WALL B SUPPORT
REF. B0101800



AH TABLE CLAMP
REF. B010190



RAIL PLUS BRACKET
REF. 82026



EXTENSION ARM
REF. B0101S0



VISTA LED

Lamp with magnifying lens designed with LED technology to emit two types of light: wood's light (UV) and daylight.

It is used specially in dermatology, aesthetics, veterinary medicine and research procedures.

Great ease of use thanks to the switch located on the head of the luminaire. The switch allows you to choose the type of light. Protective sliding cap that covers the lens. The magnifying lens are made of glass.

Available in two options:

- VISTA LED HANDLE: Hand version with white color head and black color handle.
- VISTA LED PLUS: Articulated arm version.



VISTA LED HANDLE

Technical Details		(REF. E051L)
Light source	LED 3W	
Lenses	3 diopters	
Magnification Lens Dimensions	100mm x 60mm	
Power supply	100/240 V - 50/60 Hz	
Color	White	
UV Light mode		
Number of LEDs	2	
Wavelength	365 nanometers	
UV Type	UVA	
Daylight mode		
Number of LEDs	2	
Color temperature	4.500°K	
Color rendering	>80%	



UV Light - UV LED



Daylight - White LED



Light mode selection switch



White LED

UV LED



Lens protection lid closed position

Front view and profile view



TROLLEY STAND
8,8 kg REF. 09651

VISTA LED PLUS

Technical Details		(REF. E051PL)
Light source	LED 3W	
Lenses	3 diopters	
Magnification Lens Dimensions	100mm x 60mm	
Power supply	100/240 V - 50/60 Hz	
Articulated Arm Length	900 mm	
Color	White	
UV Light mode		
Number of LEDs	2	
Wavelength UVA	365 nanometers	
UV Type	UVA	
Daylight mode		
Number of LEDs	2	
Color temperature	4.500°K	
Color rendering	>80%	

VISTA PLUS H.F versions:

- **AH TABLE CLAMP** (REF. B010190)
- **WALL B SUPPORT** (REF. B0101800)
- **RAIL PLUS BRACKET** (REF. 82026)
- **EXTENSION ARM** (REF. B010150)

VISTA H.F

Lamp with magnifying lens designed to emit wood's light (UV). It is used specially in dermatology, aesthetics, veterinary medicine and research procedures.

Great ease of use thanks to the switch located on the head of the luminaire. Protective sliding cap that covers the lens. The magnifying lens are made of glass.

Available in two options:

- VISTA UV HANDLE H.F: Hand version with white color head and black color handle.
- VISTA PLUS H.F: Articulated arm version. Optional white light.



*Lens protection lid
closed position*



VISTA UV HANDLE H.F

Technical Details	(REF. E051LAT212)
Light source	FL UV compact 9W
Wavelength UVA	360 nanometers
Lenses	3 diopters
Magnification Lens Dimensions	100mm x 60mm
Color	White



Front view and profile view



VISTA PLUS H.F

Technical Details		(REF. E051CAO012)
Light source	FL UV compact 9W	
Light source (optional)	FL compact 9W 840	
Lenses	3 diopters	
Magnification Lens Dimensions	100mm x 60mm	
Articulated Arm Length	900 mm	
Color	White	

VISTA PLUS H.F versions:

- **AH TABLE CLAMP** (REF. B010190)
- **WALL B SUPPORT** (REF. B0101800)
- **RAIL PLUS BRACKET** (REF. 82026)
- **EXTENSION ARM** (REF. B0101S0)



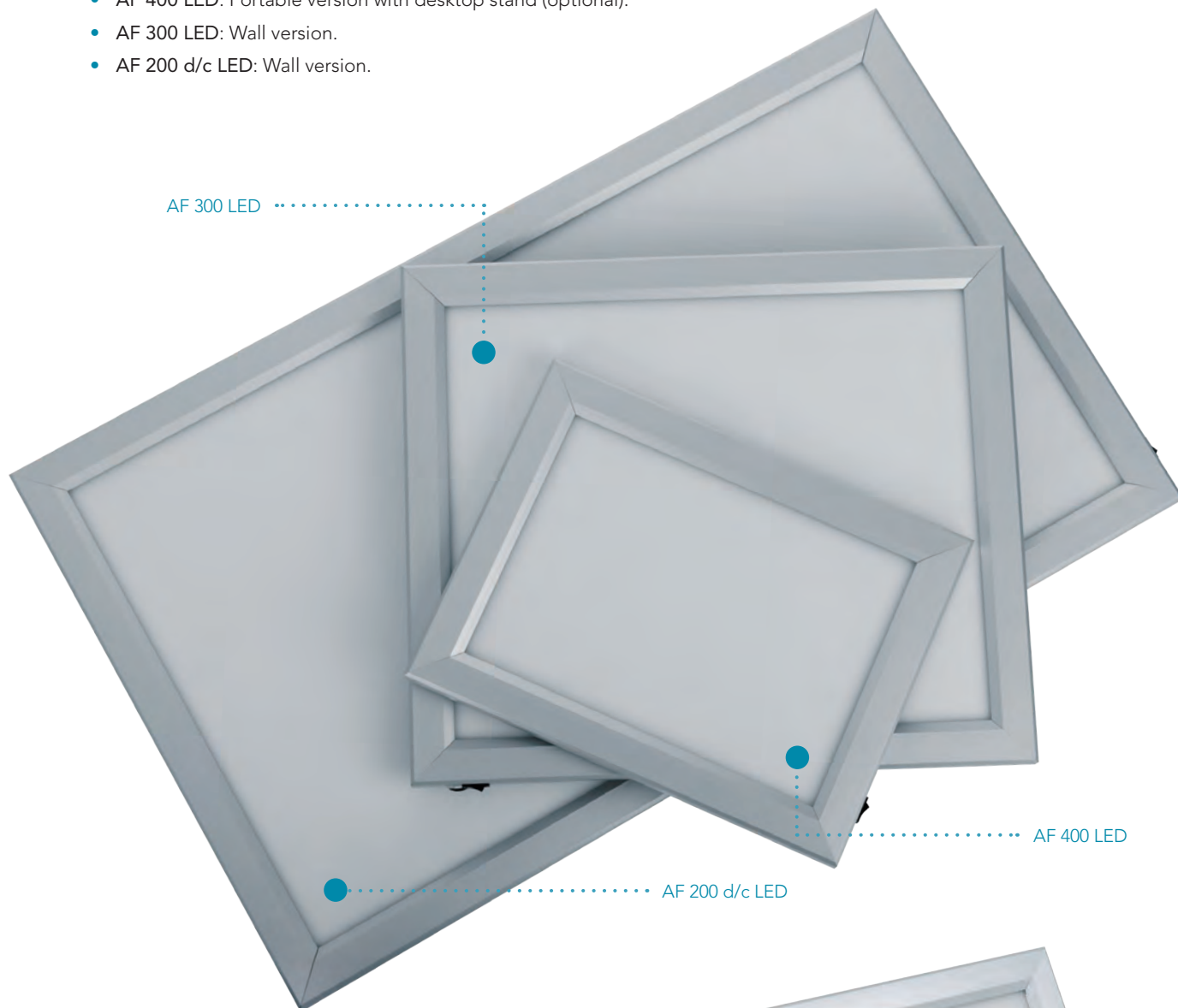
TROLLEY STAND
8,8 kg REF. 09651

X-RAY VIEWERS AF LED

Extraslim X-Ray Viewers series with a 25 millimeter thickness and made of aluminum frame. This format provides a LED light source for greater illuminance. This format is characterized by its low consumption and its low temperature of the screen.

Available in three formats:

- AF 400 LED: Portable version with desktop stand (optional).
- AF 300 LED: Wall version.
- AF 200 d/c LED: Wall version.



Desktop stand AF 400 LED
DESKTOP STAND
REF. AF-A



Accessory stainless steel desktop stand for AF 400 LED

AF 400 LED

Technical Details	(REF. AF400LED)
Light source	LED 8 W
Luminous intensity	9950 cd/m ²
Color temperature	6000 °K
Useful life	50.000 hours
Illuminated surface	295 x 210 mm
Device External Dimensions	365 x 280 x 25 mm
Power supply	100/240 V - 50/60 Hz
Frame material	Aluminum
Recommended temperature	from 10 to 40 °C

AF 300 LED

Technical Details	(REF. AF300LED)
Light source	LED 14 W
Luminous intensity	6300 cd/m ²
Color temperature	6000 °K
Useful life	50.000 hours
Illuminated surface	350 x 420 mm
Device External Dimensions	420 x 490 x 25 mm
Power supply	100/240 V - 50/60 Hz
Frame material	Aluminum
Recommended temperature	from 10 to 40 °C

AF 200 d/c LED

Technical Details	(REF. AF200d/cLED)
Light source	LED 32 W
Luminous intensity	6700 cd/m ²
Color temperature	6000 °K
Useful life	50.000 hours
Illuminated surface	420 x 750 mm
Device External Dimensions	490 x 820 x 25 mm
Power supply	100/240 V - 50/60 Hz
Frame material	Aluminum
Recommended temperature	from 10 to 40 °C



Front view and extrusion profile view detail
AF 400 LED version



ACCESSORIES

WALL B SUPPORT

Wall support
Shaft-wall separation: 7cm
REF. B0101800



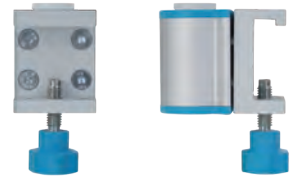
AH TABLE CLAMP

Table fixing
REF. B010190



RAIL PLUS BRACKET

To adapt to U.C.I rail
REF. 82026



TROLLEY STAND

H=92 cm Ø 60 cm
4 kg REF. 09655
8,8 kg REF. 09651



EXTENSION ARM

It provides 40 cm rotation from the wall
WALL B SUPPORT included
REF. B010150



MIMSAL



2023
Medical Lighting
NON-MEDICAL DEVICES



CONTENT

NON-MEDICAL DEVICES

- LAMP FOR EXAMINATION AND MINOR SURGERY PROCEDURES
LS LED
- INFRARED LAMP
LS INFRA *LS Infra* *LS Infra Timer*
- ACCESSORIES

LS LED

LS LED is an examination lamp. The luminaire is mounted with a highly precise articulated arm and it is manufactured with a metal structure. It is specially designed to be used in examination procedures.

Easy to use

Adjustable height articulated arm, allows easy adjustment in different positions, provides a long reach and maximum vertical and horizontal movement, and always remains in the correct position.

Switch located on the connection cable.

Simple and durable

Metallic structure, manufactured with durable materials and with very low maintenance costs.

Mounting Options

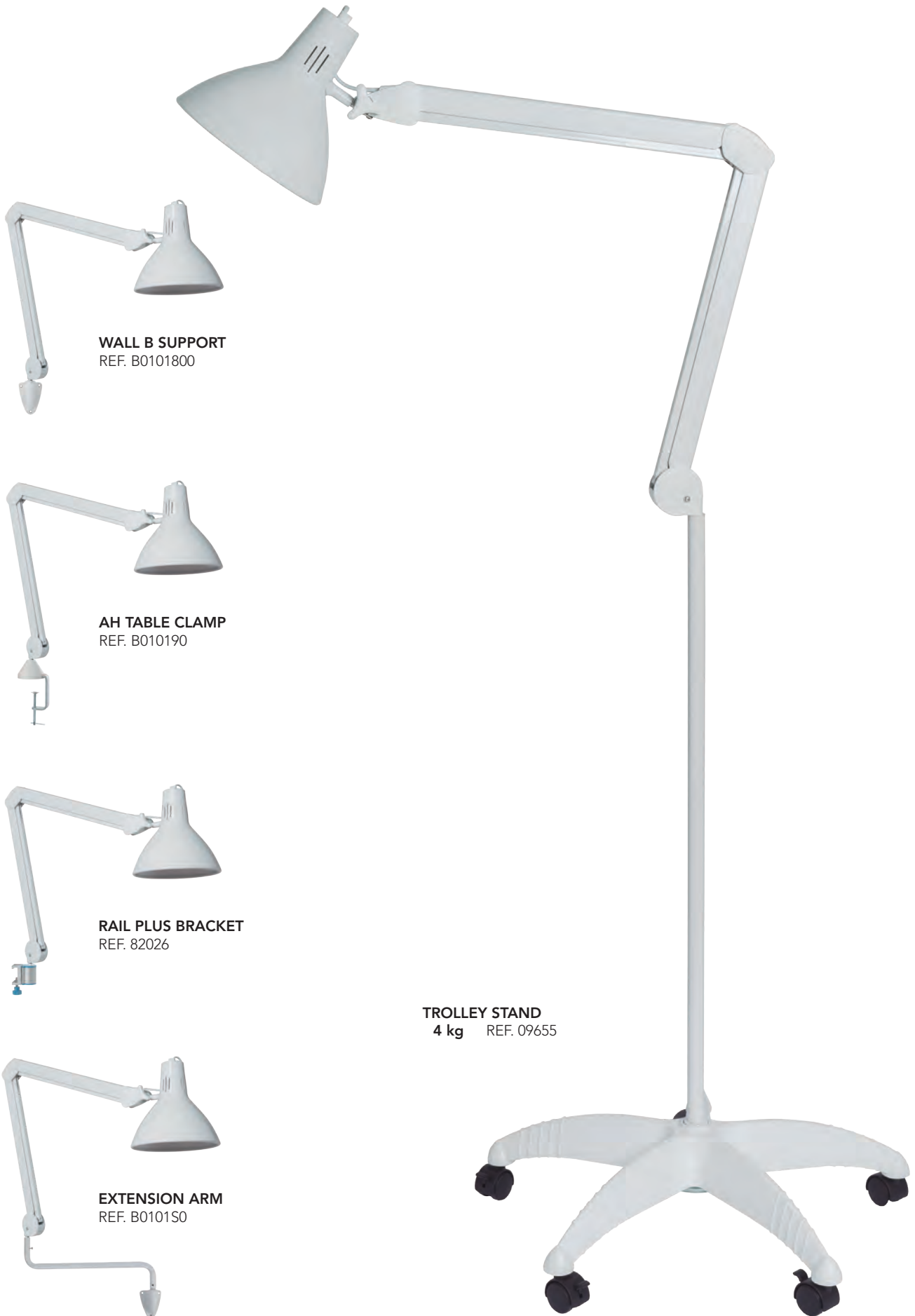
The standard version includes AH table clamp.

As for accessories, we offer a wide selection of supports such as wall supports, wall extension arms, trolleys stand and rail brackets.



LS LED

Technical Details		(REF. LS010316LED)
Light source	LED	7,5W
Head Diameter	210 mm	
Base	E-27 ceramic	
Articulated Arm Length	900 mm	
Color	White	



WALL B SUPPORT
REF. B0101800

AH TABLE CLAMP
REF. B010190

RAIL PLUS BRACKET
REF. 82026

EXTENSION ARM
REF. B0101S0

TROLLEY STAND
4 kg REF. 09655

LS INFRA

LS Infra is an infrared lamp. The luminaire is mounted with a highly precise articulated arm. It is available in 150W or 250W bulb.

Easy to use

Adjustable height articulated arm, allows easy adjustment in different positions, provides a long reach and maximum vertical and horizontal movement, and always remains in the correct position.

Simple and durable

Metallic structure, manufactured with durable materials and with very low maintenance costs.

Mounting Options

The standard version includes AH table clamp.

As for accessories, we offer a wide selection of supports such as wall supports, wall extension arms, trolleys stand and rail brackets.



LS INFRA

Technical Details	
Light source	IR E-27 150W
	IR E-27 250W
Head Diameter	210 mm
Base	E-27 ceramic
Articulated Arm Length	900 mm
Color	White

LS Infra versions:

- **LS Infra 150** (REF. E020412)
- **LS Infra 250** (REF. E02041250)



..... The LS Infra Timer version: 0 - 15 minutes timer integrated on the connection cable.

LS INFRA TIMER

Technical Details	
Light source	IR E-27 150W
	IR E-27 250W
Head Diameter	210 mm
Base	E-27 ceramic
Articulated Arm Length	900 mm
Color	White
Timer 0 -15 minutes	

LS Infra Timer versions:

- **LS Infra 150 Timer** (REF. E020412T)
- **LS Infra 250 Timer** (REF. E02041250T)



WALL B SUPPORT
REF. B0101800



AH TABLE CLAMP
REF. B010190



RAIL PLUS BRACKET
REF. 82026



EXTENSION ARM
REF. B0101S0

TROLLEY STAND
4 kg REF. 09655

ACCESSORIES

WALL B SUPPORT

Wall support
Shaft-wall separation: 7cm
REF. B0101800



AH TABLE CLAMP

Table fixing
REF. B010190



RAIL PLUS BRACKET

To adapt to U.C.I rail
REF. 82026



TROLLEY STAND

H=92 cm Ø 60 cm
4 kg REF. 09655



EXTENSION ARM

It provides 40 cm rotation from the wall
WALL B SUPPORT included
REF. B010150





mimsal

MIMSAL TRADE S.L.

C. Mollet 17, Pol. Ind. Palou Nord
08401 Granollers (Barcelona) - Spain
mimsal@mimsal.com - www.mimsal.com